

- Unique European energy storage technology
- Fully certified
- Specially designed to use for all solar applications even in extreme temperature conditions
- Super long life time, leakage and maintenance free
Terminals at the front for easy connection
- Durable and sustainable with extra long cycles



SPECIFICATION

Cells Per Unit	6
Voltage Per Unit	12
Capacity	200Ah@10hr-rate to 1.75V per cell @25°C
Weight	Approx. 60 Kg
Max. Discharge Current	2000 A(5 sec)
Internal Resistance	Approx. 5.75 mΩ
Operating Temperature Range	Discharge: -20°C ~ 60°C Charge: 0°C ~ 50°C Storage: -20°C ~ 60°C
Normal Operating Temperature Range	25°C ± 5°C
Equalization and Cycle Service	100% rate capacity discharge, then put 14.6 to 14.8 V/block at 25°C
Self Discharge	Less than 3% per month at 25°C
Container Material	A.B.S. (UL94-HB) , Flammability resistance of UL94-V2 (if required)



Constant Current Discharge Characteristics Unit: A/block(25°C = 77°F)

F.V/Time	5MIN	10MIN	15MIN	30MIN	1HR	2HR	3HR	4HR	5HR	8HR	10HR	20HR
9.60V	309.8	228.1	175.2	113.3	64.03	35.76	25.71	21.28	17.41	12.24	10.45	5.527
10.0V	300.8	217.0	171.6	111.4	63.73	35.50	25.61	21.18	17.31	12.14	10.35	5.426
10.2V	291.9	209.4	168.9	110.4	63.14	35.23	25.41	21.08	17.21	12.04	10.25	5.326
10.5V	262.1	193.2	160.8	107.7	62.55	34.96	25.31	20.88	17.01	11.94	10.15	5.225
10.8V	236.6	176.2	148.2	102.9	61.07	34.33	24.63	20.39	16.70	11.74	10.05	5.125
11.1V	206.0	157.4	133.0	96.43	58.02	32.81	23.54	19.40	15.98	11.24	9.747	4.823

Constant Power Discharge Characteristics W/ block:(25°C = 77°F)

F.V/Time	5MIN	10MIN	15MIN	30MIN	1HR	2HR	3HR	4HR	5HR	8HR	10HR	20HR
9.60V	5186	3822	3169	2201	1360	830.0	579.2	475.5	389.5	268.5	227.2	125.4
10.0V	5084	3704	3118	2175	1357	825.6	579.4	474.9	388.5	267.2	225.8	123.2
10.2V	5026	3607	3083	2181	1346	820.6	576.9	473.8	387.2	265.5	223.8	120.9
10.5V	4629	3398	2975	2151	1334	814.7	574.6	469.4	382.6	263.3	221.6	118.7
10.8V	4266	3169	2782	2082	1309	804.3	559.0	458.7	375.7	258.9	219.4	116.4
11.1V	3790	2899	2533	1974	1253	774.4	534.8	436.6	359.5	247.9	212.8	109.5

All mentioned values are average values.

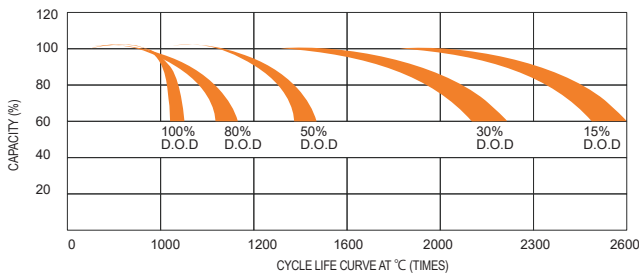
Recommended FOV (final voltage) When Discharge

Discharging Current I (A)	≤0.1C	0.1 < Cs. I 0.5C	0.5 < Cs. I 1.0C	I > 1.0C
Final of Voltage	10.8V	10.5V	10.2V	9.6V

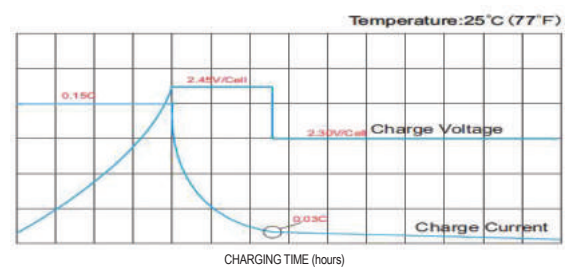
Charging Method

Usage	Temperature (°C)	Charging Voltage (V/Cell)			Charging Current (A)
		Battery Type	Rated Voltage	Allowed Range	
Cyclic Use	25°C	AGM/GEL	2.45	2.44 - 2.46	1) 0.3C for 6V,12V block, 2) 0.2C for 2V block
Float Use	25°C	AGM/GEL	2.29	2.28 - 2.30 (only for under 33Ah)	

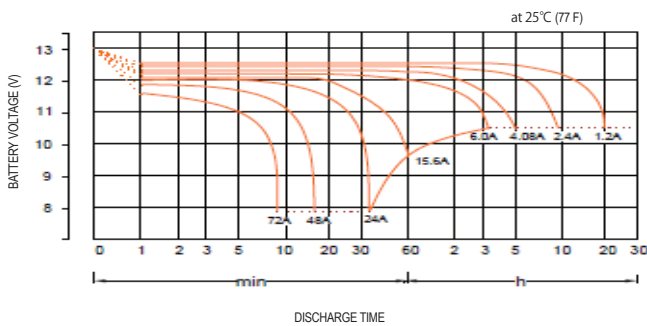
LIFE CHARACTERISTICS OF CYCLIC USE



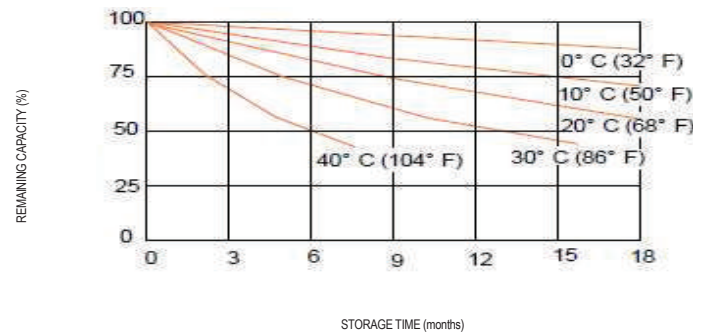
CHARGE CHARACTERISTIC CURVE FOR STANDBY USE



DISCHARGE CHARACTERISTIC CURVE



STORAGE CHARACTERISTIC

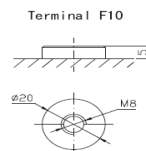
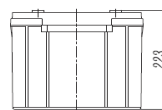
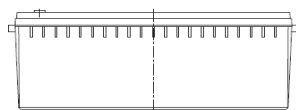
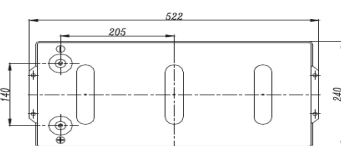


MAINTENANCE AND CAUTIONS

- 1) New battery and old battery shall not be used together, and batteries from different makers or in different capacity shall not be used together either.
- 2) Please start from positive pole for any connection . Torque for connection :M5 Torque : 6N -m ~ 7N -m ,M6 Torque : 8N-m~10N-m, M8 Torque : 10N-m~12N-m

DIMENSIONS

(unit: mm) (L x W x H = 522 x 240 x 223)



OUR PARTNER:



www.hollandiasolar.com